

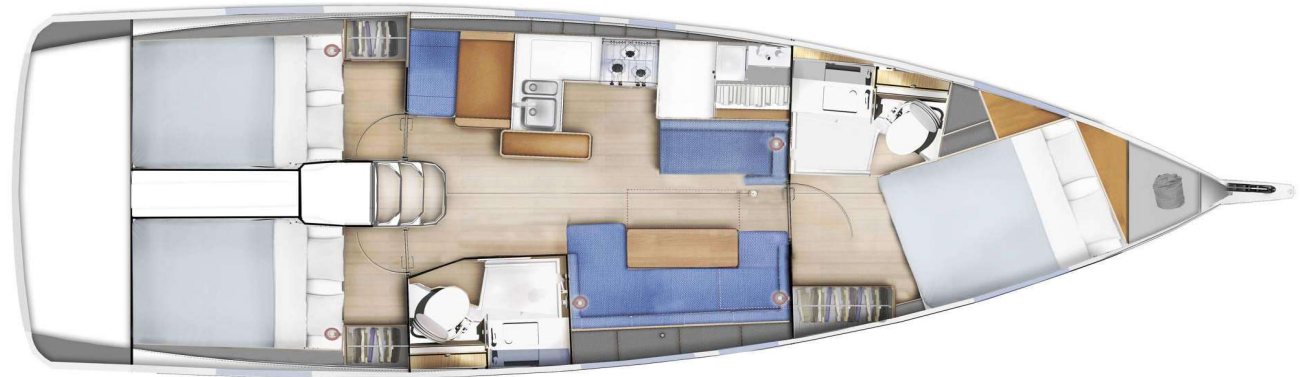


JEANNEAU

Sailing Monohull - Jeanneau Sun Odyssey 410 - Sirius II

Presentation

Boat Name	Sirius II
Type	Sailing Yacht
Shipyard	Jeanneau
Model	Sun Odyssey 410
Sails	furling mainsail
Built in	2022
Flag	Turkey
Port of Registry	Marmaris
Overall length	12,95 m
Beam	3,99 m
Draft	2,25 m
Displacement	7,78 t
Engine Model	Yanmar Diesel
Engine Power	45 HP
Fuel Capacity	200 lt





Sailing Monohull - Jeanneau Sun Odyssey 410 - Sirius II

Technical specifications

Cabin Layout

Double Cabins	3
Salon berths	2
Total berths and license	8 / 6

Hydraulic Systems

Toilets	2
e-Toilets	✓
Black water capacity	2 * 80 lt
Fresh water capacity	530 lt

Climate Control & Electrical System

220V Shore power with charger	
Airconditioning	Inverter 1.600W
190 lt fridge	Solar Panels

Galley

Complete galley equipment for 6 pax
Espresso Essenza Coffee Machine

Entertainment Systems

Fusion BT Player, loudspeakers in Saloon & Cockpit

Hull & Deck

2 Steering wheels with 2 rudders Teak cockpit
Bimini with Led lighting Sprayhood
Cockpit table & cushions E-swimming platform

Engine

Yanmar Diesel 45 HP Bowthruster

Rigging & Sails

Furling Mainsail and Genoa & Optional Gennaker
Total sails area 77m²

Navigation

Raymarine Axiom 9" Chartplotter at helm stations with Europe Map
Raymarine Repeaters I70S Windex
Raymarine Autopilot P70S Compass
Raymarine AIS Transceiver Sea charts
VHF Ray73 Barometer & Clock

Mooring & Anchoring

Electrical Windlass with remote & chain counter on cockpit
20 Kg Anchor with 100m chain & spare Anchor 16 Kg with rope
8 Sausage + 2 Balon Fender Dinghy with oars and pump
4 * 15m, 1 * 30m, 1 * 50m mooring lines

Safety equipment

Complete Safety Equipment for 6 pax